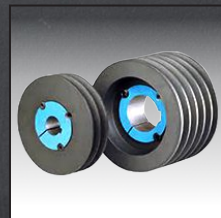


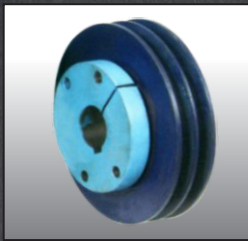
MACHINE RELIEF PULLEY



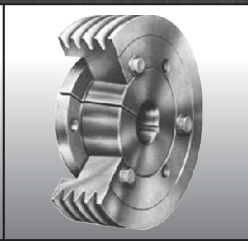
SUNIL PULLEY

THE TECHNOLOGY OF FUTURE IN MECHANICAL POWER TRANSMISSION

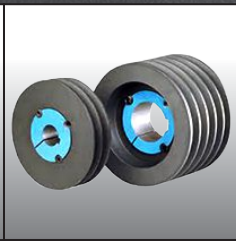




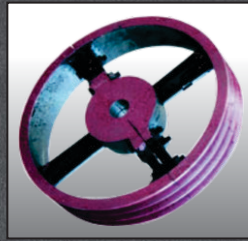
Taper Bush Pulley



Timing Pulley



Split Pulley



Compressor Pulley



Sheave
(Rope Pulley)



Step Pulley



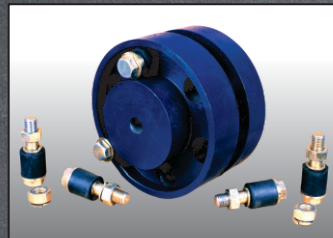
Arm Type Pulley



Gear Coupling



Tyre Coupling



Pin Bush Coupling



Star Coupling



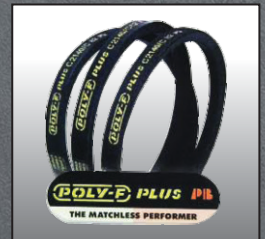
Anti Vibration Mountings



Chain Sprockets



V-Belts



SUNIL PULLEY

THE TECHNOLOGY OF FUTURE IN MECHANICAL POWER TRANSMISSION

C-139, Phase-2, Mayapuri Industrial Area, New Delhi-110064



+91 9810580479



sunilpulley@gmail.com

FOR USE WITH 'A' BELTS & 'SPA' BELTS

Pitch Dia	No. of Grooves	Bush No.	Pulley Type
67	1	1108	1
	2	1108	6
71	1	1108	1
	2	1108	6
	3	1108	6
75	1	1108	1
	2	1108	6
	3	1210	6
80	1	1108	1
	2	1108	6
	3	1210	6
	4	1215	6
	5	1215	6
85	1	1108	1
	2	1108	6
	3	1210	6
	4	1215	6
	5	1215	6
90	1	1210	1
	2	1210	6
	3	1610	6
	4	1615	3
	5	1515	3
95	1	1610	1
	2	1610	6
	3	1610	6
	4	1615	3
	5	1615	3
100	1	1610	1
	2	1610	6
	3	1610	6
	4	1615	6
	5	1615	6
	6	1615	6
106	1	1610	1
	2	1610	6
	3	1610	6
	4	1615	6
	5	2012	6
	6	2012	6
112	1	1610	1
	2	1610	6
	3	2012	6
	4	2012	6
	5	2012	6
	6	2012	6
118	1	1610	1
	2	1610	6
	3	2012	6
	4	2012	6
	5	2012	6
	6	2012	6
125	1	1610	1
	2	1610	2
	3	2012	2
	4	2012	2
	5	2012	2
	6	2012	2

Pitch Dia	No. of Grooves	Bush No.	Pulley Type
132	1	1610	1
	2	1610	2
	3	2012	2
	4	2517	2
	5	2517	2
	6	2517	2
140	1	1610	1
	2	2012	6
	3	2517	2
	4	2517	2
	5	2517	2
	6	2517	2
150	1	1610	1
	2	2012	6
	3	2517	2
	4	2517	2
	5	2517	2
	6	2517	2
160	1	1610	1
	2	2012	6
	3	2517	2
	4	2517	2
	5	2517	2
	6	2517	2
170	1	1610	1
	2	2012	6
	3	2517	2
	4	2517	2
	5	2517	2
	6	2517	2
180	1	1610	4
	2	2012	2
	3	2517	2
	4	2517	2
	5	3020	2
	6	3020	2
190	1	2012	4
	2	2012	2
	3	2517	2
	4	3020	2
	5	3020	2
	6	3020	2
200	1	2012	4
	2	2517	8
	3	2517	3
	4	3020	2
	5	3020	2
	6	3020	2
212	1	2012	4
	2	2517	8
	3	2517	3
	4	3020	2
	5	3020	2
	6	3020	2

Pitch Dia	No. of Grooves	Bush No.	Pulley Type
224	1	2012	4
	2	2517	8
	3	2517	3
	4	3020	2
	5	3020	2
	6	3020	2
236	1	2012	4
	2	2517	8
	3	2517	3
	4	3020	2
	5	3020	2
	6	3020	2
250	1	2012	4
	2	2517	8
	3	2517	7
	4	3020	7
	5	3020	7
	6	3020	7
265	1	2012	4
	2	2517	8
	3	2517	7
	4	3020	7
	5	3020	7
	6	3020	7
280	1	2012	4
	2	2517	8
	3	2517	7
	4	3020	7
	5	3535	8
	6	3535	7
300	1	2012	4
	2	2517	8
	3	2517	7
	4	3020	7
	5	3535	8
	6	3535	7
315	1	2012	4
	2	2517	4
	3	3020	8
	4	3020	7
	5	3535	8
	6	3535	7
335	1	2012	4
	2	2517	4
	3	3020	8
	4	3020	7
	5	3535	8
	6	3535	7
355	1	2012	4
	2	2517	4
	3	3020	8
	4	3020	7
	5	3535	8
	6	3535	7
375	1	2012	4
	2	2517	4
	3	3020	8
	4	3020	7
	5	3535	8
	6	3535	7

Pitch Dia	No. of Grooves	Bush No.	Pulley Type
400	1	2012	4
	2	2517	4
	3	3020	4
	4	3020	5
	5	3535	4
	6	3535	4
425	1	2012	4
	2	2517	4
	3	3020	4
	4	3020	5
	5	3535	4
	6	3535	4
450	1	2012	4
	2	2517	4
	3	3020	4
	4	3020	5
	5	3535	4
	6	3535	4
475	1	2012	4
	2	2517	4
	3	3020	4
	4	3020	5
	5	3535	4
	6	3535	4
500	1	2517	4
	2	2517	4
	3	3020	4
	4	3020	5
	5	3535	4
	6	3535	4
530	1	2517	4
	2	2517	4
	3	3020	4
	4	3020	5
	5	3535	4
	6	3535	4
560	1	3020	4
	2	3020	4
	3	3020	4
	4	3535	4
	5	3535	4
	6	3535	5
630	1	3020	4
	2	3020	4
	3	3020	4
	4	3535	4
	5	3535	4
	6	4040	4
710	3	3020	4
	4	3535	4
	5	3535	4
800	3	3535	4
	4	3535	4
	5	4040	4
	6	4040	4

FOR USE WITH 'B' BELTS & 'SPB' BELTS

Pitch Dia	No. of Grooves	Bush No.	Pulley Type
100	1	1610	1
	2	1610	6
	3	1610	6
106	1	1610	1
	2	1610	6
	3	1610	6
112	1	1610	1
	2	1610	6
	3	1610	6
118	1	1610	1
	2	1610	6
	3	1610	6
125	1	1610	1
	2	1610	6
	3	1610	6
	4	2012	3
	5	2012	3
	6	2012	3
132	1	1610	1
	2	1610	6
	3	1610	6
	4	2012	3
	5	2012	2
	6	2012	3
140	1	1610	1
	2	1610	6
	3	1610	6
	4	2012	3
	5	2012	2
	6	2017	3
150	1	1610	1
	2	1610	6
	3	2012	6
	4	2012	3
	5	2017	2
	6	2017	2
	8	2017	2
	8	2017	2
160	1	1610	1
	2	2012	6
	3	2517	6
	4	2517	3
	5	2517	3
	6	2517	2
	8	3020	2
	8	3020	2
170	1	1610	4
	2	2012	6
	3	2517	6
	4	2517	3
	5	3020	3
	6	3020	2
	8	3030	2
	8	3030	2
180	1	1610	4
	2	2012	6
	3	2517	6
	4	2517	3
	5	3020	3
	6	3020	2
	8	3030	2
	8	3030	2
190	1	2012	4
	2	2517	1
	3	2517	6
	4	2517	3
	5	3020	3
	6	3020	2
	8	3030	2
	8	3030	2

Pitch Dia	No. of Grooves	Bush No.	Pulley Type
200	1	2012	4
	2	2517	1
	3	2517	2
	4	3020	2
	5	3020	2
	6	3020	2
	8	3535	2
	8	3535	2
212	1	2012	4
	2	2517	1
	3	2517	2
	4	3020	2
	5	3020	2
	6	3020	2
	8	3535	2
	8	3535	2
224	1	2012	4
	2	2517	1
	3	2517	2
	4	3020	2
	5	3020	2
	6	3020	2
	8	3535	2
	10	3535	2
	10	3535	2
	10	3535	2
236	1	2012	4
	2	2517	1
	3	2517	2
	4	3020	2
	5	3020	2
	6	3020	2
	8	3535	2
	10	3535	2
	10	3535	2
	10	3535	2
250	1	2012	4
	2	2517	8
	3	3020	2
	4	3020	2
	5	3020	2
	6	3020	2
	8	3535	2
	10	3535	2
	10	3535	2
	10	3535	2
265	1	2012	4
	2	2517	8
	3	3020	7
	4	3020	7
	5	3535	7
	6	3535	7
	8	3535	7
	10	3535	7
	10	3535	7
	10	3535	7
280	1	2012	4
	2	2517	8
	3	3020	7
	4	3020	7
	5	3535	7
	6	3535	7
	8	3535	7
	10	3535	7
	10	3535	7
	10	3535	7
300	1	2012	4
	2	2517	8
	3	3020	7
	4	3535	8
	5	3535	7
	6	3535	7
	8	3535	7
	10	3535	7
	10	3535	7
	10	3535	7

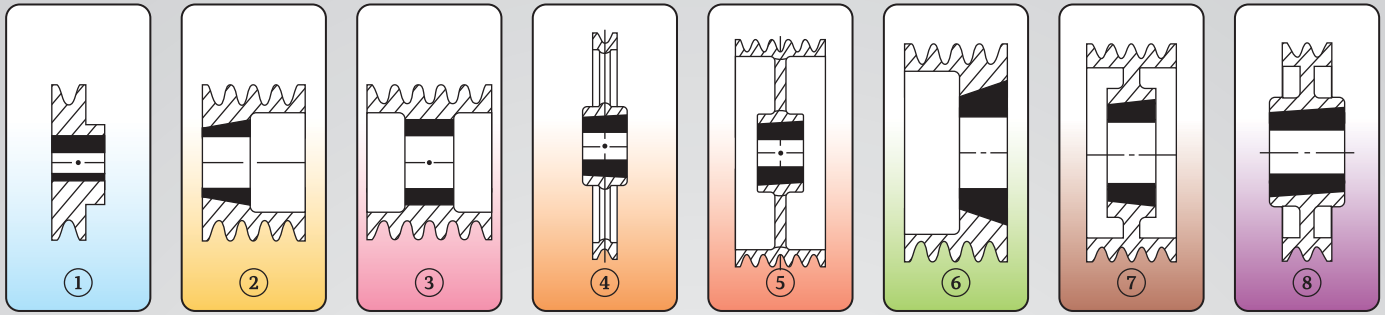
Pitch Dia	No. of Grooves	Bush No.	Pulley Type
315	1	2012	4
	2	2517	8
	3	3020	7
	4	3535	8
	5	3535	7
	6	3535	7
	8	3535	7
	10	3535	7
	10	3535	7
	10	3535	7
335	2	2517	8
	3	3020	7
	4	3535	8
	5	3535	7
	6	3535	7
	8	3535	7
	10	4040	7
	10	4040	7
	10	4040	7
	10	4040	7
355	1	2012	4
	2	3020	4
	3	3020	5
	4	3535	8
	5	3535	7
	6	3535	7
	8	3535	7
	10	4040	7
	10	4040	7
	10	4040	7
375	2	3020	4
	3	3535	4
	4	3535	4
	5	3535	5
	6	3535	5
	8	4040	5
	10	4040	5
	10	4040	5
	10	4040	5
	10	4040	5
400	1	2517	4
	2	3020	4
	3	3535	4
	4	3535	4
	5	3535	5
	6	3535	5
	8	4040	5
	10	4040	5
	10	4040	5
	10	4040	5
425	2	3020	4
	3	3535	4
	4	3535	4
	5	3535	5
	6	3535	5
	8	4040	5
	10	4040	5
	10	4040	5
	10	4040	5
	10	4040	5
450	2	3020	4
	3	3535	4
	4	3535	4
	5	3535	5
	6	4040	5
	8	4545	5
	10	4545	5
	10	4545	5
	10	4545	5
	10	4545	5
475	2	3020	4
	3	3535	4
	4	3535	4
	5	3535	5
	6	4040	5
	8	4545	5
	10	4545	5
	10	4545	5
	10	4545	5
	10	4545	5
500	1	2012	4
	2	3020	4
	3	3535	4
	4	3535	4
	5	3535	5
	6	4040	5
	8	4545	5
	10	4545	5
	10	4545	5
	10	4545	5

Pitch Dia	No. of Grooves	Bush No.	Pulley Type
530	2	3020	4
	3	3535	4
	4	3535	4
	5	4040	4
	6	4040	5
	8	4545	5
	10	4545	5
	10	4545	5
	10	4545	5
	10	4545	5
560	2	3020	4
	3	3535	4
	4	3535	4
	5	4040	4
	6	4040	5
	8	4545	5
	10	4545	5
	10	4545	5
	10	4545	5
	10	4545	5
600	2	3020	4
	3	3535	4
	4	3535	4
	5	4040	4
	6	4040	5
	8	4545	5
	10	4545	5
	10	4545	5
	10	4545	5
	10	4545	5
630	1	2517	4
	2	3020	4
	3	3535	4
	4	3535	4
	5	4040	4
	6	4040	5
	8	4545	5
	10	4545	5
	10	4545	5
	10	4545	5
710	2	3030	4
	3	3535	4
	4	3535	4
	5	4040	4
	6	4545	5
	8	4545	5
	10	4545	5
	10	4545	5
	10	4545	5
	10	4545	5
762	2	3030	4
	3	3535	4
	4	4040	4
	5	4040	4
	6	4545	5
	8	4545	5
	10	4545	5
	10	4545	5
	10	4545	5
	10	4545	5
800	2	3030	4
	3	3535	4
	4	4040	4
	5	4040	4
	6	4545	5
	8	4545	5
	10	4545	5
	10	4545	5
	10	4545	5
	10	4545	5
900	3	3535	4
	4	4040	4
	5	4545	4
	6	4545	5
	8	4545	5
	10	5050	5
	10	5050	5
	10	5050	5
	10	5050	5
	10	5050	5
1000	3	4040	4
	4	4040	4
	5	4545	4
	6	4545	5
	8	5050	5
	10	5050	5
	10	5050	5
	10	5050	5
	10	5050	5
	10	5050	5
1250	3	4040	4
	4	4040	4
	5	4545	4
	6	5050	5
	8	5050	5
	10	5050	5
	10	5050	5
	10	5050	5
	10	5050	5
	10	5050	5

FOR USE WITH 'C' BELTS & 'SPC' BELTS

Pitch Dia	No. of Grooves	Bush No.	Pulley Type	Pitch Dia	No. of Grooves	Bush No.	Pulley Type	Pitch Dia	No. of Grooves	Bush No.	Pulley Type	Pitch Dia	No. of Grooves	Bush No.	Pulley Type	Pitch Dia	No. of Grooves	Bush No.	Pulley Type				
200	2	2517	2	300	2	3020	7	425	2	3535	4	630	2	3535	4	710	2	3535	4				
	3	2517	2		3	3535	8		3	3535	4		3	4545	4		3	4545	4				
	4	3020	3		4	3535	7		4	3535	5		4	4545	4		4	4545	4				
	5	3535	3		5	3535	7		5	4040	7		5	5050	5		5	5050	5				
	6	3535	3		6	3535	7		6	4545	7		6	5050	5		6	5050	5				
	7	3535	3		7	3535	7		7	4545	7		7	5050	5		7	5050	5				
	8	3535	3		8	4040	3		8	5050	7		8	5050	5		8	5050	5				
					10	4545	3		10	5050	7		10	5050	5		10	5050	5				
212	2	2517	2		315	2	3020		7	450	2		3535	4	762		3	4545	4	800	3	5050	4
	3	3020	2			3	3535		8		3		3535	4			4	4545	4		4	5050	4
	4	3535	3	4		3535	7	4	3535		5	5	5050	5		5	5050	5					
	5	3535	3	5		3535	7	5	4040		5	6	5050	5		6	5050	5					
	6	3535	3	6		3535	7	6	4545		7	7	5050	5		7	5050	5					
	7	3535	3	7		3535	7	7	5050		7	8	5050	5		8	5050	5					
	8	3535	3	8		4040	3	8	5050		7	10	5050	5		10	5050	5					
				10		4545	3	10	5050		7												
224	2	2517	2	335		2	3020	7	475		2	3535	4	900		3	5050	4	1000		3	5050	4
	3	3020	2			3	3535	8			3	3535	4			4	5050	4			4	5050	4
	4	3535	3		4	3535	7	4		3535	5	5	5050		5	5	5050	5					
	5	3535	3		5	3535	7	5		4040	5	6	5050		5	6	5050	5					
	6	3535	3		6	3535	7	6		4545	7	7	5050		5	7	5050	5					
	7	3535	3		7	3535	7	7		5050	7	8	5050		5	8	5050	5					
	8	3535	3		8	4040	3	8		5050	7	10	5050		5	10	5050	5					
					10	4545	3	10		5050	7												
236	2	2517	2		355	2	3020	7		500	2	3535	4		530	3	5050	4		1250	3	5050	4
	3	3020	2			3	3535	8			3	3535	4			4	5050	4			4	5050	4
	4	3535	3	4		3535	7	4	3535		5	5	5050	5		5	5050	5					
	5	3535	3	5		3535	7	5	4040		5	6	5050	5		6	5050	5					
	6	3535	3	6		3535	7	6	4545		5	7	5050	5		7	5050	5					
	7	3535	3	7		3535	7	7	5050		7	8	5050	5		8	5050	5					
	8	3535	3	8		4040	3	8	5050		7	10	5050	5		10	5050	5					
				10		4545	3	10	5050		7												
250	2	3020	2	375		2	3535	8	560		2	3535	8	1250		3	5050	4	1250		3	5050	4
	3	3020	2			3	3535	8			3	3535	8			4	5050	4			4	5050	4
	4	3535	3		4	3535	7	4		3535	8	5	5050		5	5	5050	5					
	5	3535	3		5	3535	7	5		4040	5	6	5050		5	6	5050	5					
	6	3535	3		6	4040	7	6		4545	5	7	5050		5	7	5050	5					
	7	3535	3		7	4040	7	7		5050	5	8	5050		5	8	5050	5					
	8	3535	3		8	4545	7	8		5050	5	10	5050		5	10	5050	5					
	10	4040	3		10	4545	7	10		5050	5												
265	2	3020	7		400	2	3535	4		600	2	3535	8		1250	3	5050	4		1250	3	5050	4
	3	3535	7			3	3535	4			3	4040	8			4	5050	4			4	5050	4
	4	3535	3	4		3535	5	4	4545		4	5	5050	5		5	5050	5					
	5	3535	3	5		3535	5	5	4545		4	6	5050	5		6	5050	5					
	6	3535	3	6		4040	7	6	5050		5	7	5050	5		7	5050	5					
	7	3535	3	7		4545	7	7	5050		5	8	5050	5		8	5050	5					
	8	3535	3	8		4545	7	8	5050		5	10	5050	5		10	5050	5					
	10	4040	3	10		5050	7	10	5050		5												
280	2	3020	7	400		2	3535	4	600		2	3535	8	1250		3	5050	4	1250		3	5050	4
	3	3535	7			3	3535	4			3	4040	8			4	5050	4			4	5050	4
	4	3535	3		4	3535	5	4		4545	4	5	5050		5	5	5050	5					
	5	3535	3		5	3535	5	5		4545	4	6	5050		5	6	5050	5					
	6	3535	3		6	4040	7	6		5050	5	7	5050		5	7	5050	5					
	7	3535	3		7	4545	7	7		5050	5	8	5050		5	8	5050	5					
	8	3535	3		8	4545	7	8		5050	5	10	5050		5	10	5050	5					
	10	4040	3		10	5050	7	10		5050	5												

TYPES OF PULLEYS



Solar Dual Duty Taper Bush Pulleys Confirming to I.S.O. Standard

are manufactured and marketed by Specialists in Mechanical Power Transmission.

Precision made, Solar Taper Bushes make perfectly with solar pulleys, coupling wheels pinions, Hubs, the partnership ensuring a vice like grip and fast easy fixing on Shaft.

Advantage Dual-Duty Taper-Bush Pulleys

- No Damage to shaft, Bearing and motor during dismantling
 - Inter-changeable between many products
 - Saves time & cost of fitting
 - No re-boring and keywaying costs
 - Eliminates precision taper fitting keys
- Taper-bored bushes can be transferred to other diameter shafts by fitting alternate bore bushes

FOR USE WITH 'Z' BELTS & 'SPZ' BELTS

Pitch Dia	No. of Grooves	Bush No.	Pulley Type
67	1	1108	1
	2	1108	6
71	1	1108	1
	2	1108	6
75	1	1108	1
	2	1210	6
80	1	1210	1
	2	1210	6
	3	1210	6
85	1	1210	1
	2	1610	6
	3	1610	6
	4	1610	6
90	1	1210	1
	2	1610	6
	3	1610	6
	4	1610	6
	5	1610	6

Pitch Dia	No. of Grooves	Bush No.	Pulley Type
95	1	1210	1
	2	1610	6
	3	1610	6
	4	1610	6
	5	1610	6
100	1	1210	1
	2	1610	6
	3	1610	6
	4	2012	6
	5	2012	6
112	1	1610	1
	2	1610	6
	3	2012	6
	4	2012	6
	5	2012	6
125	1	1610	1
	2	1610	6
	3	2012	6
	4	2012	6
	5	2017	6

Pitch Dia	No. of Grooves	Bush No.	Pulley Type
140	1	1210	1
	2	1610	6
	3	2012	2
	4	2012	2
	5	2517	2
160	1	1610	1
	2	2012	1
	3	2012	2
	4	2517	2
	5	2517	2
180	1	1610	1
	2	2012	1
	3	2012	2
	4	2517	2
	5	2517	2
200	1	2012	1
	2	2012	1
	3	2012	2
	4	2517	3
	5	2517	7

Pitch Dia	No. of Grooves	Bush No.	Pulley Type
250	1	2012	4
	2	2012	4
	3	2012	5
	4	2517	7
	5	2517	5
315	1	1610	4
	2	2012	4
	3	2017	8
	4	2517	5
	5	2517	5
400	1	2012	4
	2	2517	4
	3	2517	4
	4	2517	5
	5	3020	5
500	1	2517	1
	2	2517	4
	3	2517	4
	4	3020	5
	5	3020	5

TAPER-LOCK BUSH DIMENSIONS

Dimensions in mm

TAPER-LOCK BUSH NUMBER	1008	1108	1210	1215	1310	1610	1615	2012	2017	2517	2525	3020	3030	3525	3535	4040	4545	5050
Nominal Diameter at Large end of Taper	35.0	38.0	47.5	47.5	51.0	57.0	57.0	70.0	70.0	85.5	85.5	108.0	108.0	127.0	127.0	146.0	162.0	177.5
FACE WIDTH	22	22	25	38	25	25	38	32	45	45	65	51	76	65	89	102	114	127
MINIMUM BORE	9	9	11	11	14	14	14	14	14	16	19	25	35	48	35	40	55	70
MAXIMUM BORE	25	28	32	32	35	42	42	50	50	60	60	75	75	90	90	100	110	125

Taper-Lock Bushes are stocked to suit standard metric and imperial shafts. All Keyways are as per relevant ISI standards. Non-standard bores can be provided against customer requirements.