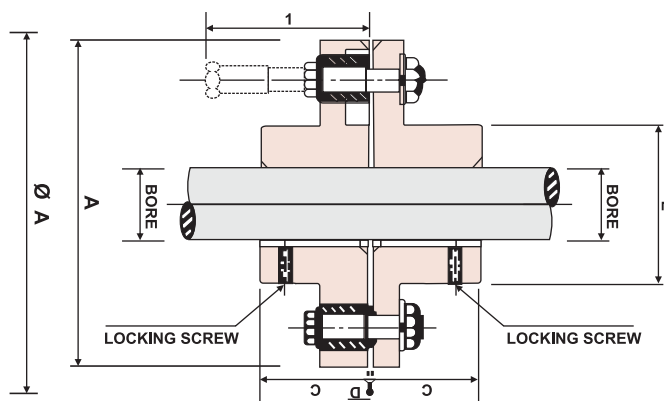


SOLAR PIN BUSH FLEXIBLE COUPLINGS



- **SOLAR PIN BUSH TYPE FLEXIBLE COUPLING** is of the cushioned drive type transmitting the torque. The coupling pins are machined to close tolerances so as to ensure maximum torque transmission with minimum bending effect.
- Solar coupling can be used for reversing load at high speeds and is not effected by dirty conditions

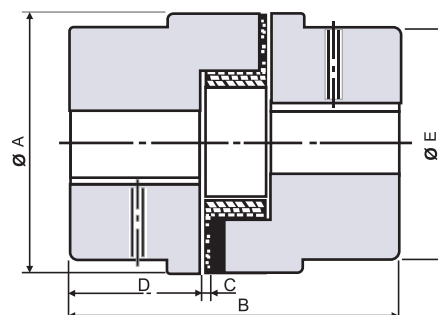
DIMENSIONS

Size	No. of Pins	Stock Min. Bore	Max. Bore	A	B	C	D	E	F	Torque Kg. M	Power per 100 REV/MIN KW	Power per 100 REV/MIN H.P.	Max. Speed REV/MIN
BC1	3	12.7	28	95	79	38	3	44	58	7.84	0.81	1.09	6000
BC2	4	12.7	30	114	99	48	3	51	70	31.60	3.29	4.41	5000
BC2A	6	16.0	42	130	105	51	3	68	70	52.59	5.47	7.34	4300
BC3	4	16.0	48	160	125	60	5	75	114	63.30	6.59	8.84	3500
BC4	4	20.0	65	191	145	70	5	105	114	84.70	8.81	11.82	2900
BC4A	6	20.0	65	191	145	70	5	105	114	126.50	13.17	17.66	2900
BC5	6	25.0	75	225	157	76	5	120	114	169.41	17.65	23.66	2500
BC6	8	45.0	95	254	183	89	5	152	114	240.46	25.05	33.58	2200
BC6A	10	45.0	95	254	183	89	5	152	114	298.87	31.13	41.74	2200
BC6B	12	45.0	95	254	183	89	5	152	114	360.14	37.51	50.29	2200
BC7	12	45.0	115	290	235	115	5	185	114	423.44	44.11	59.13	1900
NBC 7A	14	60.0	120	300	235	115	5	192	130	529.56	55.17	73.96	1850
NBC 8	16	65.0	130	310	255	125	5	208	130	592.86	61.76	82.80	1800
NBC 8A	18	65.0	135	340	265	130	5	216	130	740.87	77.18	103.47	1600
NBC 8B	12	70.0	140	360	276	135	6	224	200	889.80	92.70	124.27	1540
NBC 9	13	80.0	150	390	316	155	6	240	200	1012.43	105.48	141.40	1420
NBC 9A	15	90.0	160	410	336	165	6	256	200	1353.10	140.97	188.98	1350
NBC 10	16	100.0	170	440	366	180	6	272	200	1469.92	153.15	205.29	1250
NBC 10A	17	110.0	180	480	386	190	6	288	212	1839.95	191.70	256.97	1150
NBC 11	20	120.0	190	530	406	200	6	305	212	2424.05	252.56	338.55	1030

On Customer's Request

SOLAR PIN BUSH COUPLING Supplied With Taper Bush Pilot or Finish Bore Suitable for The Bush Size

SOLAR STAR COUPLINGS



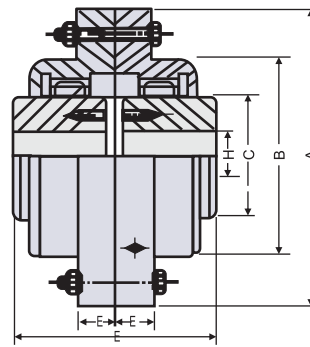
- **SOLAR STAR COUPLINGS** are designed to meet the demand for a low cost general purpose flexible coupling. Simple construction, Quick, Easy installation, No special tools required
- **APPLICATIONS** : For reciprocating, pumps in chemical industry diesel and gas engines, generator sets and other such drives.
- Solar coupling engineered to absorb vibration protect expensive equipment and minimize down time.

DIMENSIONS

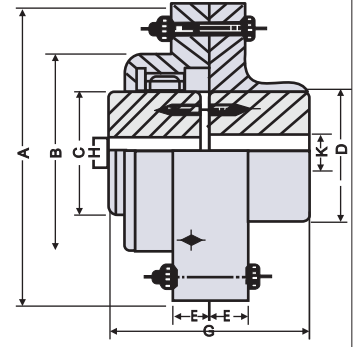
Coupling Size	Material	Bore		Outside diameter A	Overall Length B	Gap between Jaw & Body C	Length Thru. Bore D	Hub Diameter E	Torque Kg. M.	Power per 100 REV./ MIN KW	Power per 100 REV./ MIN HP
		Pilot	Max.								
SL-050	CI	5	16	27	42	1	15	27	0.29	0.03	0.04
SL-070	CI	9	20	36	51	2	19	36	0.50	0.04	0.06
SL-070	AL	9	20	36	51	2	19	36	0.40	0.037	0.05
SL-075	AL	14	22	44.5	55	2	21	39	0.80	0.08	0.11
SL-075	CI	9	22	44.5	55	2	21	39	1.00	0.10	0.13
SL-095	AL	15	28	54	63	2	25	49	1.70	0.17	0.23
SL-095	CI	15	28	54	63	2	25	49	2.15	0.22	0.30
SL-099	AL	15	30	65	72	2	27	51	2.80	0.29	0.39
SL-099	CI	15	30	65	72	2	27	51	3.58	0.37	0.50
SL-100	AL	15	38	65	88	2	35	57	4.00	0.41	0.55
SL-100	CI	15	38	65	88	2	35	57	4.73	0.49	0.66
SL-110	CI	15	42	85	108	3	43	76	8.95	0.93	1.25
SL-150	CI	15	48	96	115	3	45	80	14.32	1.49	2.00
SL-190	CI	36	55	115	133	3	54	102	19.34	2.01	2.70
SL-225	CI	36	60	127	153	3	64	108	27.00	2.81	3.77
SL-226	CI	36	65	137	178	3	70	115	32.33	3.36	4.51
SL-276	CI	45	75	157	200	3	80	127	53.71	5.59	7.50
SL-280	CI	45	75	192	200	3	80	140	79.69	8.30	11.12
SL-295	CI	58	90	192	238	3	95	160	130.41	13.58	18.21
SL-2955	CI	73	100	237	264	3	108	180	217.35	22.64	30.35

Pilot Bore other than specified are available on request, AL = Aluminium CI=Cast Iron

SOLAR FLEXIBLE GEARED COUPLING



Full Geared Coupling



Half Geared - Half Rigid Coupling

- Solar Flexible Geared Couplings are Machined From High Quality Proged Carbon Steel.
- Solar Flexible Geared Couplings are precisions with the bush Curved shaped teeth. This takes care of misalignment.
- Solar Flexible Geared Couplings are grease lubricated and are provided with grease nipples.

DIMENSIONS

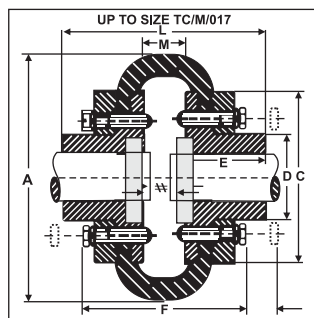
DIMENSIONS IN MM

BOTH COUPLINGS						FULL GEARED					HALF GEARED- HALF RIGID TYPE		
Size	Torque Kg. M.	Power 100 REV/MIN. KW	Power 100 REV/MIN. H.P.	Max Speed REV/MIN.	O.D. A	E	B	C	F	Max Bore H	D	G	Max Bore K
S 0	50	5.22	7	7000	150	16	90	50	105	30	60	107.5	40
S 1	100	10.44	14	6300	170	18	110	65	115	40	85	117.5	55
S 2	200	20.88	28	5000	185	18	125	90	145	55	110	147.5	70
S 3	430	44.76	60	4000	220	22	150	105	177	70	130	178.5	85
S 4	780	81.31	109	3300	250	22	180	125	219	85	160	219.5	100
S 5	1060	110.40	148	2800	290	25	205	150	245	105	190	242.5	120
S 6	1660	173.07	232	2500	320	25	235	170	265	120	215	262.5	140
S 7	2640	274.52	368	2130	350	25	265	200	315	140	245	312.5	160
S 8	3210	334.20	448	1900	380	25	295	230	365	160	280	367.5	180
S 9	4000	416.26	558	1700	430	28	330	250	415	180	310	412.5	200
S 10	6780	706.46	947	1420	490	28	390	310	495	220	360	492.5	225
S 11	10000	1041.41	1396	1250	545	30	445	350	555	260	415	557.5	270
S 12	13930	1450.97	1945	1100	590	30	490	400	620	290	460	620.5	310

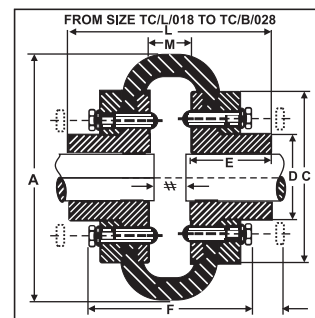
On Customer Request

SOLAR FLEXIBLE GEARED COUPLINGS Supplied with Taper Bush Pilot or Finish Bore
Suitable for the bush size.

SOLAR TYRE COUPLINGS (TC-SERIES)



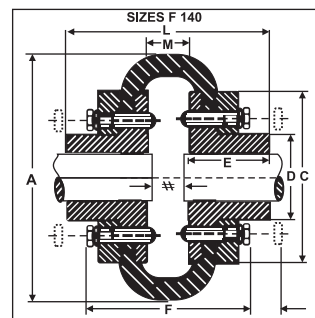
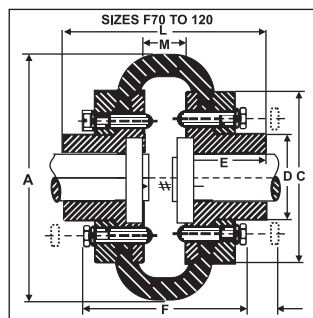
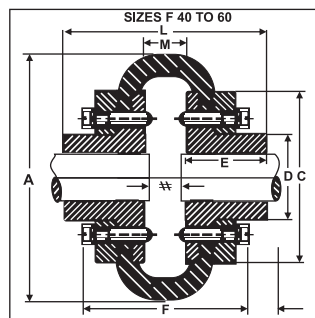
UP TO SIZE TC/M/017



FROM SIZE TC/L/018 TO TC/B/028

Size	Max. bore mm	Max. speed RPM	Cont. rating	Appx. Dimension (mm)				
			HP/100 RPM	A	L	D	E	M
TC/Z/001	9	6000	Nominal	42	54	27	19	16
TC/Z/002	11	6000	Nominal	54	68	38	24	20
TC/Z/003	14	6000	Nominal	70	78	43	27	24
TC/Z/004	18	5500	Nominal	93	74	30	26	22
TC/Y/005	20	6500	0.07	97	74	35	25	24
TC/X/006	22	5500	0.14	105	84	38	32	20
TC/W/007	24	5500	0.21	105	111	43	40	31
TC/V/008	28	5500	0.28	120	95	51	37	21
TC/U/009	32	5500	0.42	135	108	58	39	30
TC/US/0095	38	5500	0.55	144	120	66	48	24
TC/T/010	44	4400	0.63	160	132	71	49	34
TC/S/011	45	4300	0.77	164	133	75	51	31
TC/R/012	44	4200	0.98	176	147	71	53	41
TC/Q/013	50	3750	1.54	188	145	80	53	39
TC/P/014	55	3200	2.1	212	155	95	56	43
TC/O/015	70	2750	3.1	240	173	118	62	49
TC/N/016	85	2700	4.2	270	181	140	80	45
TC/M/017	90	2600	6.6	280	215	145	76	63
TC/L/018	95	2550	8.4	310	195	154	90	15
TC/K/019	100	2450	11.0	316	202	159	95	10
TC/J/020	125	2200	16.8	370	225	203	110	6
TC/I/021	125	2000	21.0	370	240	203	115	10
TC/H/022	140	1700	33.6	412	256	237	118	20
TC/G/023	140	1600	52.0	448	280	230	125	30
TC/F/024	170	1300	75.2	530	282	315	128	26
TC/E/025	145	1250	98.1	546	365	260	147	71
TC/D/026	195	1080	117.1	630	457	387	203	51
TC/C/027	ON ENQ.	960	138	746	ON ENQUIRY ON ENQUIRY			
TC/B/028	ON ENQ.	960	173	746				

SOLAR TYRE TYPE COUPLING (sF-SERIES)



Solar Tyre Type Coupling combine the optimal characteristics of the ideal coupling superior transmission capability, flexibility to with stand misalignments.

Solar Coupling in the torsional relience to dampen vibration and shock loads, high power to weight ratio, easy installation and no maintenance.

DIMENSIONS

DIMENSIONS IN MM

Size	Bore		A	L	D	E	C	G'	M''	F	Power per 100 REV./MIN KW	Power per 100 REV./MIN H.P.	Max. Speed REV.MIN
	Min. mm	Max. mm											
sF-40	13	30	104	66	-	22	82	43	22	-	0.20	0.26	4400
sF-45	13	32	120	74	-	25	94	43	24	-	0.35	0.46	4400
sF-50	18	38	133	89	79	32	100	43	25	-	0.50	0.67	4400
sF-60	18	48	165	109	73	38	125	43	33	-	1.05	1.40	3900
sF-70	20	55	197	130	82	45	144	10	40	101	1.60	2.14	3600
sF-80	26	65	211	145	95	51	167	10	43	106	2.55	3.41	3000
sF-85	32	70	222	150	103	53	179	13	44	107	3.10	4.15	2900
sF-90	32	76	235	160	110	57	188	13	46	119	3.75	5.02	2800
sF-100	32	85	254	168	124	60	216	13	48	123	5.19	6.95	2500
sF-110	32	90	279	174	134	65	233	14	44	127	7.32	9.80	2200
sF-120	39	102	314	201	152	76	264	14	49	140	12.20	16.50	2000
sF-140	76	120	359	211	195	89	311	14	29	152	19.20	25.72	1700
sF-160	75	140	402	234	216	102	345	19	30	156	32.10	43.01	1500
sF-180	75	175	470	274	266	114	398	19	46	188	57.00	76.00	1400

G' is the amount by which clamping screws need to be withdrawn to release tyre.

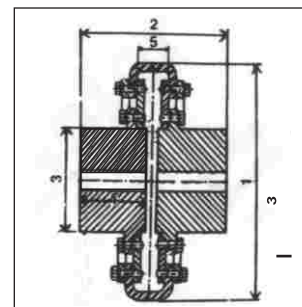
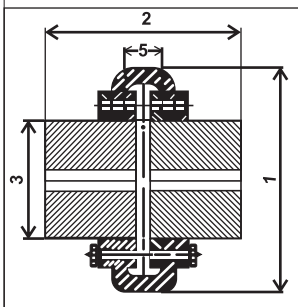
M' is the distance between flanges.

Normally Shaft ends may be kept M distance apart. However, they can be kept at larger distance apart care being taken that sufficient shaft/keyway length is covered by the Hub. The shaft length can be also be brought nearer each other keeping in mind the end-play between shaft to avoid chattering.

On Customer's Request

Solar Type Flex coupling supplied with Taper Bush Pilot or finish Bore suitable for the Bush size.

SOLAR TYRE COUPLINGS (PH-SERIES)



Solar PH-Coupling's flexible member firmly bolted to clamping elements not held in place merely by friction like in conventional coupling's. Solar Ph-coupling significantly superior rating No possibility of flexible member slipping out of the assembly even in case of imperfect installation.

Size	Max. Bore mm (Dim 6)	Max. speed RPM	Rating		Appx. Dimension (mm)				
			Torque Kg. M	H.P./100 RPM	1	2	3	4	5
TC-34	10	7000	Nominal	Nominal	34	34	14	16	6
TC-40	12	7000	-do-	-do-	40	40	17	19	8
TC-46	15	6500	0.87	0.12	46	40	22	19	8
TC-56	18	6000	1.08	0.15	56	48	26	22	11
TC-66	25	6000	1.52	2.21	66	54	36	25	11
TC-76	27	6000	1.81	0.25	76	66	39	30	14
TC-86	34	6000	2.90	0.40	86	76	49	35	14
TC-96	36	5500	3.62	0.50	96	76	51	35	16
TC-106	38	5500	4.35	0.60	106	76	54	35	18
TC-116	42	5500	5.34	0.75	116	88	60	40	22
TC-126	48	5500	9.00	1.25	126	88	68	40	22
TC-140	50	5500	12.70	1.75	140	100	72	46	26
TC-160	57	5000	16.40	2.25	160	108	82	50	28
TC-178	60	4500	22.0	3.00	178	128	100	60	32
TC-190	65	4000	29.0	4.00	190	146	105	70	30
TC-218	75	3500	43.5	6.00	218	160	124	75	36
TC-250	80	3000	62.0	8.50	250	192	145	90	40
TC-272	100	2750	80.0	11.00	272	205	163	90	55
TC-292	105	2600	109	15.00	292	228	168	105	47
TC-316L	90	2500	174	24.00	316	195	150	90	47
TC-316H	115	2500	174	24.00	316	245	190	115	47
TC-342L	90	2250	232	32.00	342	195	150	90	53
TC-342H	120	2250	232	32.00	342	255	198	120	53
TC-390L	100	2000	290	40.00	390	218	165	100	57
TC-390H	140	2000	290	40.00	390	298	230	140	57
TC-450L	130	1600	508	70.00	450	270	216	125	60
TC-450H	175	1600	508	70.00	450	360	286	170	60
TC-520L	150	1400	726	100	520	294	250	135	62
TC-520H	220	1400	726	100	520	384	354	180	62
TC-600	AS REQUIRED	1300	1310	180	600	TO SUIT REQUIREMENT			
TC-672		1100	1960	270	672				
TC-725		950	2900	400	725				
TC-812		850	4356	600	812				
TC-1000		750	6534	900	1000				
TC-1100		650	8712	1200	1100				
TC-1175		550	10890	1500	1175				
TC-1250		500	14520	2000	1250				